

AURA V1.86

Priority for Indoor Commercial Display

Product Features :

❖ Self-developed cabinet:

Unique exterior design, there are anti-dorking hole positions on the left and right, and the bottom has a bump-proof raised design.

❖ High precision

Cabinet CNC machining size tolerance $\pm 0.05\text{mm}$ can be seamless splicing, flatness $\leq 0.2\text{mm}$.

❖ High Brightness ,High Contrast, High Refresh

Standard brightness $\geq 500\text{nit}$, refresh rate up to 5000:1 ,
Standard 3840Hz.

❖ Good Compatibility

Replace the indoor P1.2~P4 module with the same series.

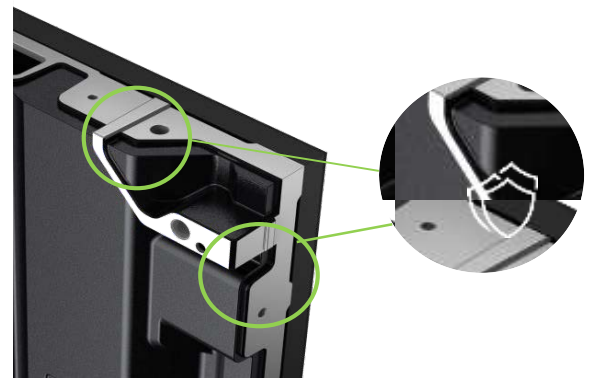
❖ Efficient Installation,Front Maintenance

❖ Support 45° cut angle, 90° splicing programmatic *

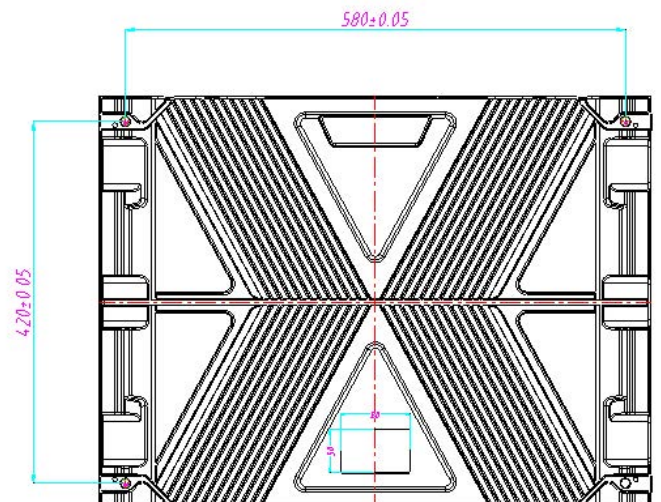
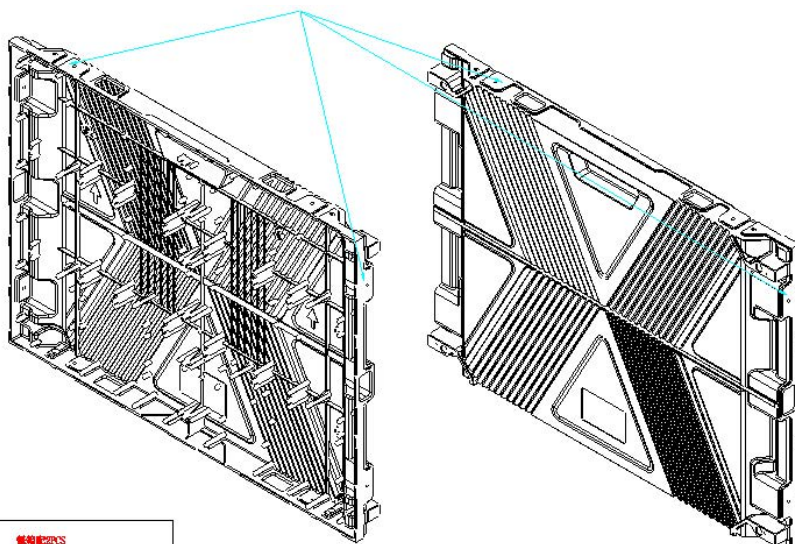
❖ Supports dual backup of power and signal*

❖ Support XYZ six adjustments*

❖ Support cut half cabinet program (320*480mm)*



Thickness: 44.9mm
Weight: 3kg



SPECIFICATION PARAMETERS:

	Parameter	Value
Module	Pixel Pitch	1.86mm
	LED Type	SMD1515
	Module Resolution (W×H)	172×86=14792 Pixels
	Pixel density (pixels/sq.m.)	288906 dot/m ²
	Module Size (W×H)	W320mm×H160mm
Cabinet	Cabinet Size (W×H×D)	640mm×480mm×60mm (With Back Cover)
	Cabinet Weight (kg/panel)	7.8 kg
	Maintenance	Full front maintenance
	Ingress Protection	IP30
	Planeness	≤0.5mm
	Cabinet Material	Die-casting Aluminum
	Single-dot Brightness Calibration	Support
Optical	Brightness	500 cd/m ²
	Color Temperature	2000K ~ 9300K Adjustable
	Beam Angle (Hor/Ver°)	160°/140°
	Brightness/Color Uniformity	≥98%
	Contrast Ratio	5000:1
	Input Power <Max>	387 W/m ²
Electroni	Input Power <Typical>	129 W/m ²
	Power Supply Input Voltage	AC200-240V, Frequency 47-63(Hz)
	Frame Changing Frequency	60Hz
Performance	Refresh Rate	3840Hz
	Processing Depth	12~14Bit
	Video Support	2K、4K
	Life Span (hrs)	100000hrs
Environm	Working Temp/Humidity (°C/RH)	-20°C~45°C / 10%~60%RH (No Condensation)
	Storage Temp/Humidity (°C/RH)	-20°C~50°C / 10%~65%RH (No Condensation)
	Certification	CE/CB/ROHS/EAC/CCC/BS476-7

Note:

- Product pictures are for illustration only, the actual product effects (including but not limited to appearance, color, size) may be slightly different, please refer to the actual product.
- The specification parameters are reference values. Part of the data comes from Unilumin's internal laboratory and is obtained under a specific test environment. In actual use, it may be slightly different due to product batch differences, configuration differences, software versions, use conditions and environmental factors. Actual usage shall prevail.
- Different configurations can achieve different refresh rates.